

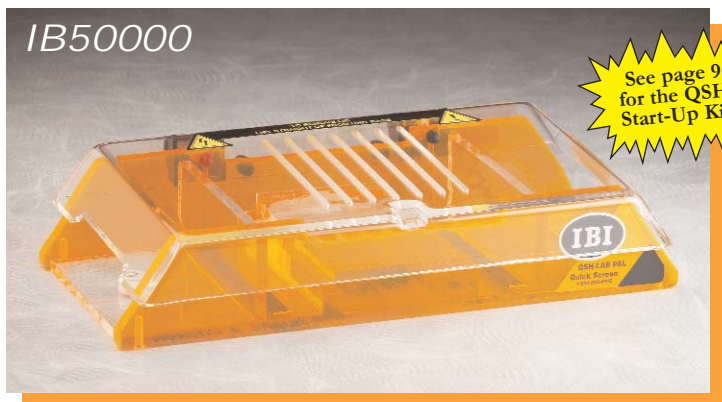
IBI's QSH Lab-Pal horizontal gel box is specially designed for the educational market, based upon years of tested and proven performance in the research market. The QSH Lab-Pal maintains all key features to enhance performance with an emphasis on safety, durability, and ease of use. Best in class quality has been maintained with a focus on unit cost and most importantly, cost of operation, which helps stretch your valuable budget's resources!

ORDERING INFORMATION

CATALOG# DESCRIPTION

IB50000 QSH LAB-PAL ELECTROPHORESIS SYSTEM (5X7CM)

*Comes complete with vented lid, dual casting fixture, four glass casting slides, two 1.5mm x 5 tooth combs, bubble level, and power cords.



IB50000 comes complete with: Patented vented lid, dual casting fixture, four glass casting slides, two 1.5mm x 5 tooth combs, bubble level, power cords, and operation manual.

The IBI QSH Lab-Pal incorporates a patented vented lid which allows heat to escape from the gel rig, and thus improves the resolution of faster gel runs. Additional safety is incorporated into the lid with the patented gravity electrical connectors, which disconnects the power to the unit when the lid is removed.

The unique, dedicated dual casting system allows casting independent from the unit, while providing maximum efficiency between lab partners. The dual gel casting system eliminates the need for casting tape! The QSH Lab-Pal casting system also allows for numerous gel slides to be cast and stored for later use (when covered with buffer and refrigerated). *This feature helps to minimize classroom gel casting time and also maximizes precious classroom teaching time.*

The QSH Lab-Pal is constructed of durable cast acrylic, which allows for years of use and resists cracking or warping!

The operation manual includes casting procedures, replacement parts, and helpful hints to maximize your unit's performance in your teaching lab. IBI offers a complete "priced and packaged" line of electrophoresis reagents for the educational market.

The IB50000 has a patented vented lid. Patent# 5,779,869.

SPECIFICATIONS

	Height	Width	Length
Unit Dimensions:	7.0cm	15.0cm	30.5cm
Gel Dimensions:		5.0cm	7.0cm

CAPACITY

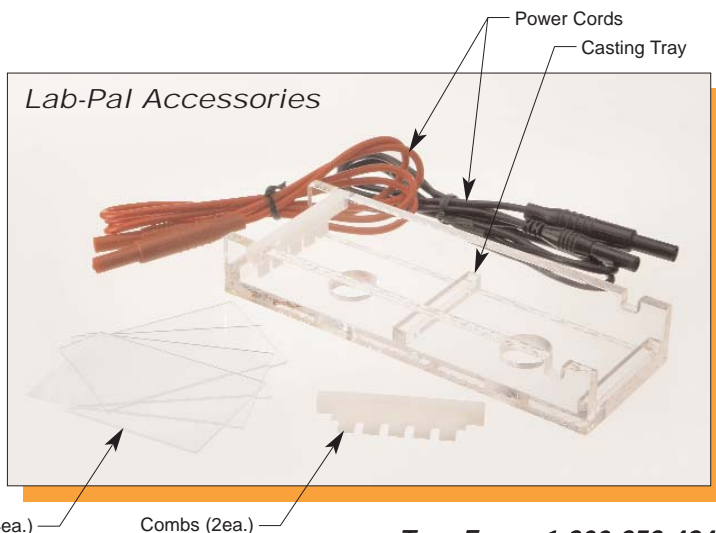
- Maximum Sample Capacity: **10 Samples** (1 Combs, 10 Samples)
- Buffer Capacity: **250ml**
- Distance Between Electrodes: **13.0cm**
- Maximum Voltage: **200V**

ACCESSORIES AND REPLACEMENT PARTS

CATALOG#	DESCRIPTION
IB50020	Dual Gel Casting Fixture
IB50140	Casting Slides, Pack of 20
IB50220	QSH QuickLoader
IB50500	Replacement Power Cords
IB50505	Replacement Tank Connector Kit
IB50200	Replacement QSH Lab-Pal Tank
IB50300	Replacement QSH Lab-Pal Lid
IB53305	Replacement QSH Lab-Pal Electrode Assembly

ADDITIONAL COMBS AVAILABLE

CATALOG#	DESCRIPTION	WELL WIDTH	SAMPLE VOLUME PER MM GEL
IB50040	1.0mm x 5 tooth	6.0mm	6.0µl
IB50050	1.0mm x 10 tooth	2.6mm	2.6µl
IB50080	1.5mm x 5 tooth	6.0mm	9.0µl
IB50090	1.5mm x 10 tooth	2.6mm	3.9µl
IB50060	1.0mm, 0 marker, 1 sample	44.0mm	44.0µl
IB50070	1.0mm, 1 marker, 1 sample	6.0, 34.6mm	6.0, 34.6µl
IB50100	1.5mm, 0 marker, 1 sample	44.0mm	66.0µl
IB50110	1.5mm, 1 marker, 1 samples	6.0, 34.6mm	9.0, 52.0µl



IBI's QS-710, Quick-Screening Electrophoresis Gel Box (7x10cm) is designed for rapid linear separations of nucleic acids. It requires minimal setup and provides excellent band resolution with consistent lane-to-lane mobility for accurate results. The QS-710 is versatile for use with applications requiring quick screens, such as fragment analysis and recombinant screening, all in 30 minutes or less.

SPECIFICATIONS

	Height	Width	Length
Unit Dimensions:	6.4cm	11.4cm	22.2cm
Gel Dimensions:		7.0cm	10.0cm

CAPACITY

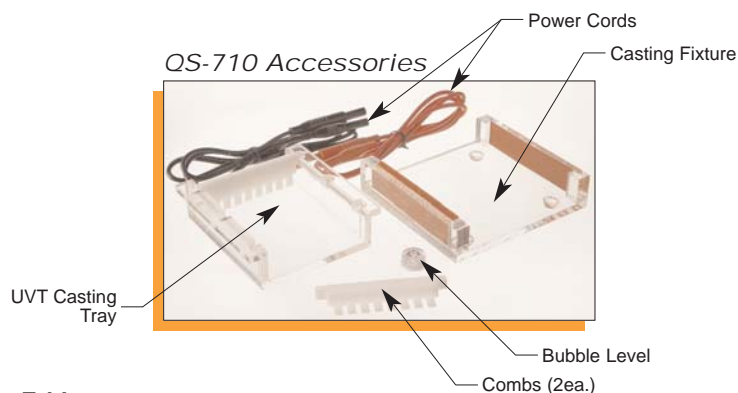
- Maximum Sample Capacity: **30 Samples** (2 Combs, 15 Samples Ea.)
- Buffer Capacity: **250ml**
- Distance Between Electrodes: **19.3cm**
- Maximum Voltage: **200V**

ACCESSORIES AND REPLACEMENT PARTS

CATALOG#	DESCRIPTION
IB51020	QS-710 UV Transmittant Casting Tray
IB51025	QS-710 Casting Fixture
IB51030	QS-710 Casting System (UVT Tray w/Fixture)
IB50500	Replacement Power Cords
IB50504	Replacement Bubble Level
IB50505	Replacement Tank Connector Kit
IB51200	Replacement QS-710 Tank
IB51300	Replacement QS-710 Lid
IB51305	Replacement QS-710 Electrode Assembly

ADDITIONAL COMBS AVAILABLE

CATALOG#	DESCRIPTION	WELL WIDTH	SAMPLE VOLUME PER MM GEL
IB51040	1.0mm x 8 tooth	4.7mm	4.7µl
IB51045	1.0mm x 12 tooth	2.8mm	2.8µl
IB51050	1.0mm x 15 tooth	2.2mm	2.2µl
IB51055	1.5mm x 8 tooth	4.7mm	7.0µl
IB51060	1.5mm x 12 tooth	3.0mm	4.0µl
IB51065	1.5mm x 15 tooth	2.2mm	3.3µl
IB51046	2.0mm x 12 tooth	3.0mm	6.0µl
IB51090	2.0mm x 10 tooth	4.0mm	8.0µl
IB51095	3.0mm x 6 tooth	5.8mm	17.3µl
IB51070	1.0mm, 0 marker, 1 sample	62.6mm	62.6µl
IB51075	1.0mm, 1 marker, 1 sample	4.7, 54.7mm	4.7, 54.7µl
IB51080	1.5mm, 0 marker, 1 sample	62.6mm	94.0µl
IB51085	1.5mm, 1 marker, 1 sample	4.7, 54.7mm	7.0, 82.0µl



ORDERING INFORMATION

CATALOG#	DESCRIPTION
IB51000	QS-710 ELECTROPHORESIS SYSTEM (7x10CM) *Comes complete with vented lid, UV transmittant casting tray, casting fixture, two 1.5mm x 8 tooth combs, bubble level, and power cords.

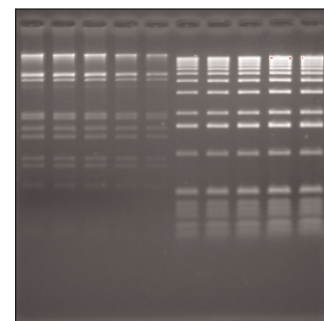


IB51000 comes complete with: Patented vented lid, UV transmittant casting tray, casting fixture, two 1.5mm x 8 tooth combs, bubble level, power cords, and operation manual.

The QS-710 has been designed by users for rapid electrophoresis. The maximum suggested applied voltage for the electrophoresis of DNA in agarose gels, using the QS-710, is 100 volts. In a 1% TBE gel, this translates into a run time of approximately 1 hour. Lower voltages may be used, of course, and as a general rule a 50 volt run will take twice as long as a 100 volt run. Higher voltages may be used to decrease the run time; however, if the unit is being operated at higher voltages the heat generated during electrophoresis may decrease sample resolution. Such artifacts may be avoided by running the unit in a cold room or by adding 1X electrophoresis buffer "ice cubes" to keep the unit properly cooled.

The suggested run parameters for the electrophoresis of RNA in agarose gels containing formaldehyde is 60-80 volts. Since the QS-710 has no capacity for buffer recirculation, the buffer from each reservoir should be collected after 1.5 hours of electrophoresis.

The IB51000 has a patented vented lid. Patent# 5,779,869.

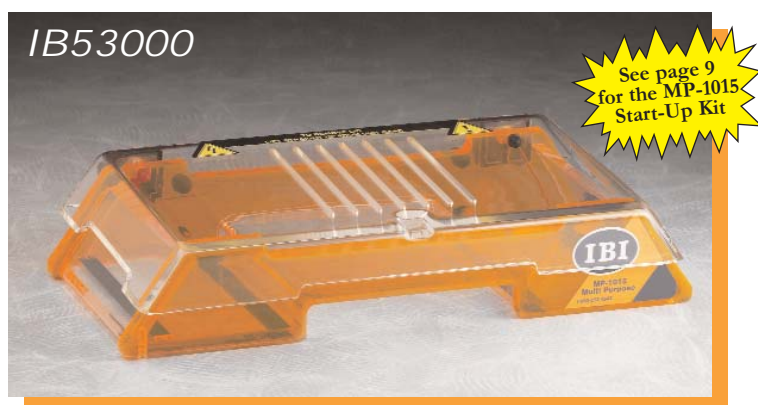


QS-710 1% TBE Gel Run

IBI's MP-1015, Multi-Purpose Electrophoresis Gel Box (10x15cm) is a general purpose unit for both extended high-resolution linear runs as well as economical quick screens. It is equipped with recirculation ports for procedures requiring buffer recirculation. The MP-1015 is constructed of durable cast acrylic, which will withstand high voltages and extreme temperatures without cracking or warping, unlike most molded units. The MP-1015 can be transformed into a quick screening unit with samples resolved in just 30-60 minutes. Resolution of restriction digestions, plasmid purification, and ligation reactions are all possible with short runs. The MP-1015 is also compatible with a number of analytical and preparative combs for virtually every horizontal electrophoresis application.

ORDERING INFORMATION

CATALOG#	DESCRIPTION
IB53000	MP-1015 ELECTROPHORESIS SYSTEM (10x15CM) *Comes complete with vented lid, UV transmittant casting tray, casting fixture, two 2.0mm x 16 tooth combs, bubble level, buffer ports, adjustable feet and power cords.

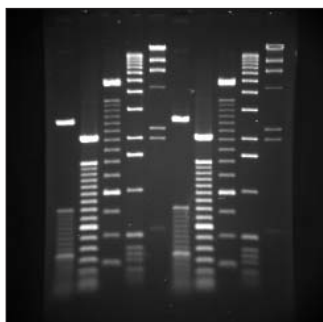


IB53000 comes complete with: Patented vented lid, UV transmittant casting tray, casting fixture, two 2.0mm x 16 tooth combs, bubble level, buffer ports, adjustable feet, power cords, and operation manual.

The MP-1015 is designed for multipurpose electrophoresis. The maximum suggested applied voltage for the electrophoresis of DNA in agarose gels using the MP-1015 is 140 volts. In a 1% TBE gel this translates into a run time of approximately 1 hour. Lower voltages may be used, of course, and as a general rule a 70 volt run will take twice as long as a 140 volt run. Higher voltages may be used to decrease run time. However, if the unit is being operated at higher voltages than 140 volts the heat generated during electrophoresis may decrease sample resolution. Such artifacts may be avoided by running the unit in a cold room, recirculating buffer, or adding 1X electrophoresis buffer "ice cubes" to keep the unit properly cooled.

The suggested run parameters for the electrophoresis of RNA in agarose gels containing formaldehyde is 60-80 volts.

The IB53000 has a patented vented lid. Patent# 5,779,869.



MP-1015 1.2% TBE Gel Run

SPECIFICATIONS

	Height	Width	Length
Unit Dimensions:	7.0cm	16.5cm	30.5cm
Gel Dimensions:		10.0cm	15.0cm

CAPACITY

- Maximum Sample Capacity: **80 Samples** (4 Combs, 20 Samples Ea.)
- Buffer Capacity: **500ml**
- Distance Between Electrodes: **27.0cm**
- Maximum Voltage: **200V**

ACCESSORIES AND REPLACEMENT PARTS

CATALOG#	DESCRIPTION
IB53020	MP-1015 UV Transmittant Casting Tray
IB53030	MP-1015 Casting Fixture
IB53040	MP-1015 Casting System (UVT Tray w/Fixture)
IB50500	Replacement Power Cords
IB50501	Replacement Elbows
IB50503	Replacement Feet
IB50504	Replacement Bubble Level
IB50505	Replacement Tank Connector Kit
IB52200	Replacement Tank Kit: Bubble Level, Feet, Buffer Port Kit
IB52210	Replacement Buffer Port Kit
IB52220	MP-1015/MPH QuickLoader
IB53200	Replacement MP-1015 Tank
IB53300	Replacement MP-1015 Lid
IB53305	Replacement MP-1015 Electrode Assembly

ADDITIONAL COMBS AVAILABLE

CATALOG#	DESCRIPTION	WELL WIDTH	SAMPLE VOLUME PER MM GEL
IB52060	1.0mm x 10 tooth	6.3mm	6.3µl
IB52090	1.0mm x 16 tooth	3.5mm	3.5µl
IB52160	1.0mm x 20 tooth	2.6mm	2.6µl
IB52165	1.5mm x 20 tooth	2.6mm	4.5µl
IB52155	1.5mm x 22 tooth	2.6mm	3.9µl
IB52070	2.0mm x 10 tooth	6.3mm	12.6µl
8920316	2.0mm x 11 tooth, MCP**	6.3mm	12.6µl
IB53070	2.0mm x 13 tooth	4.0mm	8.0µl
IB52100	2.0mm x 16 tooth	3.5mm	7.0µl
IB52170	2.0mm x 20 tooth	2.6mm	5.2µl
IB52080	3.0mm x 10 tooth	6.3mm	18.9µl
8695108	3.0mm x 11 tooth, MCP**	6.3mm	18.9µl
IB52110	3.0mm x 16 tooth	3.5mm	10.5µl
IB52180	3.0mm x 20 tooth	2.6mm	7.8µl
IB52120	1.0mm, 2 markers, 1 sample	2.9, 81.8mm	2.9, 82.0µl
IB52130	2.0mm, 2 markers, 1 sample	2.9, 81.8mm	5.8, 163.0µl
IB53080	3.0mm, 2 markers, 1 sample	2.9, 81.8mm	8.7, 245.0µl
IB52140	1.0mm, 2 markers, 2 samples	2.9, 39.3mm	2.9, 39.0µl
IB52150	2.0mm, 2 markers, 2 samples	2.9, 39.3mm	5.8, 78.0µl
IB53090	3.0mm, 2 markers, 2 samples	2.9, 39.3mm	8.7, 117.0µl

MCP** - Multichannel Pipette Compatible

WEBSITE: WWW.IBISCI.COM

IBI's HR-2025, High-Resolution Electrophoresis Gel Box (20x25cm) is ideal for separation of nucleic acids in agarose gels. It is designed for rapid screening of PCR fragments, RFLP analysis or plasmid screening, field inversion, genomic DNA separations, and electrophoresis, and electrophoresis procedures requiring recirculation. This system is constructed of durable cast acrylic for years of faithful operation. The HR-2025 stands up to high voltages and extreme temperatures exceptionally well, and will not crack or warp unlike most injection molded units. The machined Delrin™ combs come in a variety of configurations, a number of which are multichannel pipetter compatible. The quick casting system is based on a compressible gasket for ease of use, without adjustments or leaky gates.

SPECIFICATIONS

	Height	Width	Length
Unit Dimensions:	8.3cm	23.5cm	39.4cm
Gel Dimensions:		20.0cm	25.0cm

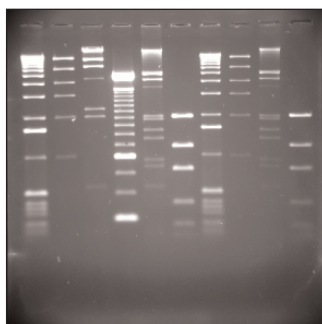
CAPACITY

- Maximum Sample Capacity: **160 Samples** (4 Combs, 40 Samples Ea.)
- Buffer Capacity: **1200ml**
- Distance Between Electrodes: **35.0cm**
- Maximum Voltage: **200V**

ADDITIONAL COMBS AVAILABLE

CATALOG#	DESCRIPTION	WELL WIDTH	SAMPLE VOLUME PER MM GEL
IB54180	1.0mm x 10 tooth	16.6mm	16.6µl
IB56050	1.0mm x 12 tooth	13.1mm	13.1µl
IB56055	1.0mm x 15 tooth	9.8mm	9.8µl
IB54060	1.0mm x 20 tooth	6.5mm	6.5µl
IB54090	1.0mm x 30 tooth	4.0mm	4.0µl
IB56100	1.0mm x 40 tooth	3.2mm	3.2µl
IB56101	1.0mm x 44 tooth, MCP**	2.9mm	2.9µl
IB54190	2.0mm x 10 tooth	16.6mm	49.8µl
IB56115	2.0mm x 12 tooth	13.1mm	26.2µl
IB56125	2.0mm x 15 tooth	9.8mm	19.6µl
IB54070	2.0mm x 20 tooth	6.5mm	13.0µl
8091100	2.0mm x 22 tooth, MCP**	6.3mm	12.6µl
IB54100	2.0mm x 30 tooth	4.0mm	8.0µl
IB56135	2.0mm x 40 tooth	3.2mm	6.4µl
IB56102	2.0mm x 44 tooth, MCP**	2.9mm	5.8µl
IB54080	3.0mm x 20 tooth	6.5mm	19.5µl
8093767	3.0mm x 22 tooth, MCP**	6.3mm	18.9µl
IB54110	3.0mm x 30 tooth	4.0mm	12.0µl
IB56140	3.0mm x 40 tooth	3.2mm	9.6µl
IB56103	3.0mm x 44 tooth, MCP**	2.9mm	8.7µl
IB54120	1.0mm, 2 markers, 1 sample	4.0, 184.0mm	4.0, 184.0µl
IB54140	1.0mm, 2 markers, 2 samples	4.0, 91.0mm	4.0, 91.0µl
IB54130	2.0mm, 2 markers, 1 sample	4.0, 184.0mm	8.0, 368.0µl
IB54150	2.0mm, 2 markers, 2 samples	4.0, 91.0mm	8.0, 182.0µl
IB56145	3.0mm, 2 markers, 1 sample	4.0, 184.0mm	12.0, 552.0µl
IB56150	3.0mm, 2 markers, 2 samples	4.0, 91.0mm	12.0, 273.0µl

MCP** - Multichannel Pipette Compatible



HR-2025 1.0% TBE Gel Run

ORDERING INFORMATION

CATALOG#	DESCRIPTION
IB56000	HR-2025 ELECTROPHORESIS SYSTEM (20x25CM) *Comes complete with vented lid, UV transmittant casting tray, casting fixture, two 2.0mm x 20 tooth combs, bubble level, buffer ports, adjustable feet and power cords.



IB56000 comes complete with: Patented vented lid, UV transmittant casting tray, casting fixture, two 2.0mm x 20 tooth combs, bubble level, buffer ports, adjustable feet, power cords, and operation manual.

ACCESSORIES AND REPLACEMENT PARTS

CATALOG#	DESCRIPTION
IB56020	HR-2025 UV Transmittant Casting Tray
IB56030	HR-2025 Casting Fixture
IB56040	HR-2025 Casting System (UVT Tray w/Fixture)
IB50500	Replacement Power Cords
IB50501	Replacement Elbows
IB50503	Replacement Feet
IB50504	Replacement Bubble Level
IB50505	Replacement Tank Connector Kit
IB52200	Replacement Tank Kit: Bubble Level, Feet, Buffer Port Kit
IB52210	Replacement Buffer Port Kit
IB54220	HR-2025/HRH QuickLoader
IB56200	Replacement HR-2025 Tank
IB56300	Replacement HR-2025 Lid
IB56305	Replacement HR-2025 Electrode Assembly

The HR-2025 is designed for high resolution electrophoresis. The maximum suggested applied voltage for the electrophoresis of DNA in agarose gels using the HR-2025 is 140V.

The suggested run parameters for the electrophoresis of RNA in agarose gels containing formaldehyde is 60-80 volts.

The IB56000 has a patented vented lid. Patent# 5,779,869.

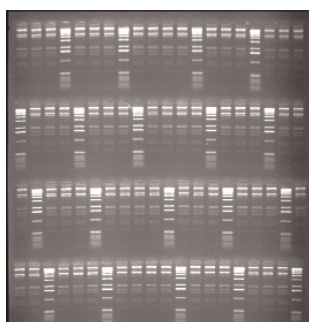
IBI's HR-2525, High-Resolution/High-Throughput Electrophoresis Gel Box (25x25cm) is ideal for separation of nucleic acids in agarose gels. It is designed for rapid screening of PCR fragments, RFLP analysis or plasmid screening, field inversion, genomic DNA separations, and electrophoresis procedures requiring recirculation. Up to 50 PCR 8 strips can be completed in 15 minutes. This system is constructed of durable cast acrylic for years of faithful operation. The HR-2525 stands up to high voltages and extreme temperatures exceptionally well, and will not crack or warp unlike most injection molded units. The machined Delrin™ combs come in a variety of configurations, all of which are multichannel pipetter compatible. The quick casting system is based on a compressible gasket for ease of use, without adjustments or leaky gates.

ORDERING INFORMATION

CATALOG#	DESCRIPTION
IB57000	HR-2525 ELECTROPHORESIS SYSTEM (20x25CM) *Comes complete with vented lid, UV transmittant casting tray, casting fixture, four 2.0mm x 50 tooth combs, bubble level, buffer ports, adjustable feet and power cords.



IB57000 comes complete with: Patented vented lid, UV transmittant casting tray, casting fixture, four 2.0mm x 50 tooth combs, bubble level, buffer ports, adjustable feet, power cords, and operation manual.



HR-2525 1.5% TBE Gel Run



Multichannel Pipette Compatible
(8 or 12 Channel)

SPECIFICATIONS

	Height	Width	Length
Unit Dimensions:	8.3cm	26.7cm	39.4cm
Gel Dimensions:		25.0cm	25.0cm

CAPACITY

- Maximum Sample Capacity: **300 Samples** (6 Combs, 50 Samples Ea.)
- Buffer Capacity: **1500ml**
- Distance Between Electrodes: **35.0cm**
- Maximum Voltage: **200V**

ACCESSORIES AND REPLACEMENT PARTS

CATALOG#	DESCRIPTION
IB57020	HR-2525 UV Transmittant Casting Tray
IB57030	HR-2525 Casting Fixture
IB57040	HR-2525 Casting System (UVT Tray w/Fixture)
IB50500	Replacement Power Cords
IB50501	Replacement Elbows
IB50503	Replacement Feet
IB50504	Replacement Bubble Level
IB50505	Replacement Tank Connector Kit
IB52200	Replacement Tank Kit: Bubble Level, Feet, Buffer Port Kit
IB52210	Replacement Buffer Port Kit
IB57200	Replacement HR-2525 Tank
IB57300	Replacement HR-2525 Lid
IB57305	Replacement HR-2525 Electrode Assembly

ADDITIONAL COMBS AVAILABLE

CATALOG#	DESCRIPTION	WELL WIDTH	SAMPLE VOLUME PER MM GEL
IB57125	1.0mm x 25 tooth, MCP**	5.8mm	5.8µl
IB57150	1.0mm x 50 tooth, MCP**	2.9mm	2.9µl
IB57225	2.0mm x 25 tooth, MCP**	5.8mm	11.6µl
IB57250	2.0mm x 50 tooth, MCP**	2.9mm	5.8µl
IB57325	3.0mm x 25 tooth, MCP**	5.8mm	17.5µl
IB57350	3.0mm x 50 tooth, MCP**	2.9mm	8.7µl
IB57425	1.5mm x 25 tooth, MCP**	5.8mm	8.7µl
IB57450	1.5mm x 50 tooth, MCP**	2.9mm	4.4µl

MCP** - Multichannel Pipette Compatible

The HR-2525 is designed for high resolution electrophoresis. The maximum suggested applied voltage for the electrophoresis of DNA in agarose gels using the HR-2525 is 140V.

The suggested run parameters for the electrophoresis of RNA in agarose gels containing formaldehyde is 60-80 volts.

The IB57000 has a patented vented lid. Patent# 5,779,869.

TOLL FREE: 1-800-253-4942

IBI's DNA Lab Start-Up Kits combine high quality IBI horizontal electrophoresis systems and IBI molecular biology reagents to make up an excellent value for your new lab start-up. Each kit contains a complete horizontal electrophoresis system, one liter of 10X TAE buffer concentrate, one liter of 10X TBE buffer concentrate, a 5ml bottle of 6X loading dye, and 100gm of IBI molecular biology grade agarose. *Everything you need to begin research or teaching in your lab!*

ORDERING INFORMATION

CATALOG#	DESCRIPTION
----------	-------------

IB50000B QSH LAB-PAL DNA START-UP KIT

*Each kit comes complete with an IB50000 QSH Lab-Pal unit, 6X loading dye, 10X TAE buffer, 10X TBE buffer, and 100gm of molecular biology grade agarose.

ORDERING INFORMATION

CATALOG#	DESCRIPTION
----------	-------------

IB51000B QS-710 DNA START-UP KIT

*Each kit comes complete with an IB51000 QS-710 unit, 6X loading dye, 10X TAE buffer, 10X TBE buffer, and 100gm of molecular biology grade agarose.

ORDERING INFORMATION

CATALOG#	DESCRIPTION
----------	-------------

IB53000B MP-1015 DNA START-UP KIT

*Each kit comes complete with an IB53000 MP-1015 unit, 6X loading dye, 10X TAE buffer, 10X TBE buffer, and 100gm of molecular biology grade agarose.

ORDERING INFORMATION

CATALOG#	DESCRIPTION
----------	-------------

IB56000B HR-2025 DNA START-UP KIT

*Each kit comes complete with an IB56000 HR-2025 unit, 6X loading dye, 10X TAE buffer, 10X TBE buffer, and 100gm of molecular biology grade agarose.

ORDERING INFORMATION

CATALOG#	DESCRIPTION
----------	-------------

IB57000B HR-2525 DNA START-UP KIT

*Each kit comes complete with an IB57000 HR-2525 unit, 6X loading dye, 10X TAE buffer, 10X TBE buffer, and 100gm of molecular biology grade agarose.



IB51000B comes complete with: IB51000 electrophoresis system, IB01010 (6X loading dye), IB70040 (agarose), IB70150 (10X TBE buffer), and IB70160 (10X TAE buffer)

IBI's Protein Lab Start-Up Kits are made from the NEW IB94000 MaGELin protein system, designed to run 10x10cm cast-your-own polyacrylamide gels or various other pre-cast gels in a dual running format. This kit also includes high quality IBI molecular biology reagents for your protein system needs. Included is one liter of 10X Tris-Glycine-SDS running buffer, a 5ml bottle of 2X protein loading dye, and 1L of Blue-Clean stain.

ORDERING INFORMATION

CATALOG#	DESCRIPTION
----------	-------------

IB94000B MAGELIN PROTEIN START-UP KIT

*Each kit comes complete with an IB94000 MaGELin protein system, 2X loading dye, 10X Tris-Glycine-SDS buffer, and 1L of Blue-Clean stain

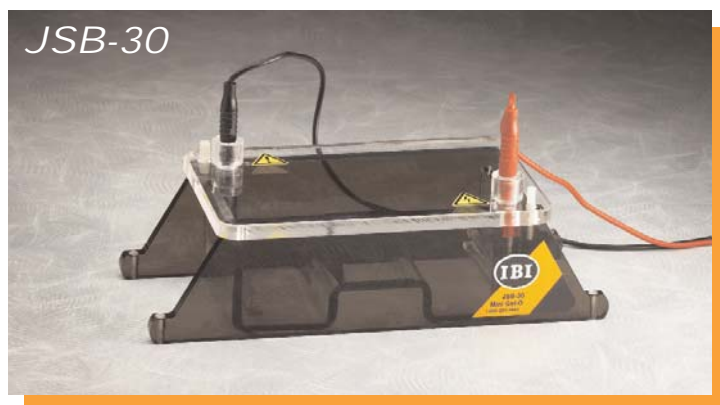
JSB-30 7.5x10cm FORMAT ELECTROPHORESIS SYSTEM

HORIZONTAL
ELECTROPHORESIS

The Jordan Mini Gel-O Submarine System is used for mini gel format quick screens with up to 18 samples per run. This system can process a large number of samples and is ideal for PCR, fragment analysis, or recombinant screening. The JSB-30 format can run up to 18 samples in under 30 minutes. The JSB-30 is constructed of durable cast acrylic for years of faithful operation.

ORDERING INFORMATION

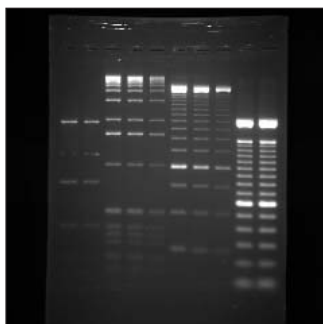
CATALOG#	DESCRIPTION
JSB-30	MINI GEL-O SUBMARINE SYSTEM *Comes complete with lid, UV transmittant casting tray (10cm), casting fixture (10cm), one 1.5mm x 13 tooth comb, comb holder, bubble level, adjustable feet, and power cords.



JSB-30 comes complete with: lid, UV transmittant casting tray (10cm), casting fixture (10cm), one 1.5mm x 13 tooth comb, comb holder, bubble level, adjustable feet, power cords, and operation manual.

The JSB-30 is designed for nucleic acid screening electrophoresis. The maximum suggested applied voltage for the electrophoresis of DNA in agarose gels using the JSB-30 is 150 volts. In a 1% TBE gel, this translates into a run time of approximately 1 hour. Lower voltages may be used, of course, and as a general rule, a 75 volt run will take twice as long as a 150 volt run. Higher voltages may be used to decrease run time; however, if the unit is being operated at higher voltages than 150 volts the heat generated during electrophoresis may decrease sample resolution. Such artifacts may be avoided by running the unit in a cold room or adding 1X electrophoresis buffer "ice cubes" to keep the unit properly cooled.

The suggested run parameters for the electrophoresis of RNA in agarose gels containing formaldehyde are 60-80 volts.



JSB-30 1.0% TBE Gel Run

SPECIFICATIONS

	Height	Width	Length
Unit Dimensions:	7.5cm	10.0cm	28.0cm
Gel Dimensions:		7.5cm	10cm

CAPACITY

- Maximum Sample Capacity: **18 Samples** (1 Comb, 18 Samples Ea.)
- Buffer Capacity: **375ml**
- Distance Between Electrodes: **16.0cm**
- Maximum Voltage: **200V**

ACCESSORIES AND REPLACEMENT PARTS

CATALOG#	DESCRIPTION
CS-3010	JSB-30 Casting Fixture, 10cm
GB-3010	JSB-30 Gel Bed, 10cm
CS-3005	JSB-30 Casting Fixture, 5cm
GB-3005	JSB-30 Gel Bed, 5cm
CS-3075	JSB-30 Casting Fixture, 7.5cm
GB-3075	JSB-30 Gel Bed, 7.5cm
CH-30	JSB-30 Comb Holder
HA-30-B	Replacement JSB-30 Electrode Assembly-Black
HA-30-R	Replacement JSB-30 Electrode Assembly-Red
JSB-30-C	Replacement JSB-30 Lid w/Power Cords
SPC-M4	Replacement Jordan Power Cords
230000-00	Replacement Feet and Bubble Level

ADDITIONAL COMBS AVAILABLE

CATALOG#	DESCRIPTION	WELL WIDTH	SAMPLE VOLUME PER MM GEL
CSM-0808	0.8mm x 8 tooth	5.8mm	4.7µl
CSM-0813	0.8mm x 13 tooth	4.0mm	3.2µl
CSM-0818	0.8mm x 18 tooth	2.3mm	1.9µl
CSM-1508	1.5mm x 8 tooth	5.8mm	8.7µl
CSM-1513	1.5mm x 13 tooth	4.0mm	6.0µl
CSM-1518	1.5mm x 18 tooth	2.3mm	3.5µl

WANT TO SAVE ON AGAROSE?

The JSB-30 has additional gel beds with matching casting fixtures available that allow the user to cast a shorter gel when extended resolution of molecules is not necessary. Ideal for quick screens to verify PCR.

The Jordan Double-Wide Mini Gel-O Submarine System is used for mini gel format quick screens with twice the number of samples. This system can process a large number of samples and is ideal for PCR, fragment analysis, or recombinant screening. The JSB-302 format can run up to 36 samples in under 30 minutes.

SPECIFICATIONS

	Height	Width	Length
Unit Dimensions:	7.5cm	20.0cm	28.0cm
Gel Dimensions:		15cm	10cm

CAPACITY

- Maximum Sample Capacity: **36 Samples** (1 Comb, 36 Samples Ea.)
- Buffer Capacity: **650ml**
- Distance Between Electrodes: **16.0cm**
- Maximum Voltage: **200V**

ACCESSORIES AND REPLACEMENT PARTS

CATALOG#	DESCRIPTION
CS-3210	JSB-302 Casting Fixture, 10cm
GB-3210	JSB-302 Gel Bed, 10cm
CS-3205	JSB-302 Casting Fixture, 5cm
GB-3205	JSB-302 Gel Bed, 5cm
CS-3275	JSB-302 Casting Fixture, 7.5cm
GB-3275	JSB-302 Gel Bed, 7.5cm
CH-302	JSB-302 Comb Holder
HA-302-B	Replacement JSB-302 Electrode Assembly-Black
HA-302-R	Replacement JSB-302 Electrode Assembly-Red
JSB-302-C	Replacement JSB-302 Lid w/Power Cords
SPC-M4	Replacement Jordan Power Cords
230000-00	Replacement Feet and Bubble Level

ADDITIONAL COMBS AVAILABLE

CATALOG#	DESCRIPTION	WELL WIDTH	SAMPLE VOLUME PER MM GEL
CSD-0816	0.8mm x 16 tooth	5.8mm	4.7µl
CSD-0827	0.8mm x 27 tooth	4.0mm	3.2µl
CSD-0836	0.8mm x 36 tooth	2.3mm	1.9µl
CSD-1516	1.5mm x 16 tooth	5.8mm	8.7µl
CSD-1522	1.5mm x 22 tooth	5.0mm	7.5µl
CSD-1527	1.5mm x 27 tooth	4.0mm	6.0µl
CSD-1533	1.5mm x 33 tooth	3.0mm	4.5µl
CSD-1536	1.5mm x 36 tooth	2.3mm	3.5µl

WANT TO SAVE ON AGAROSE?

The JSB-302 has additional gel beds with matching casting fixtures available that allow the user to cast a shorter gel when extended resolution of molecules is not necessary. Ideal for quick screens to verify PCR.

ORDERING INFORMATION

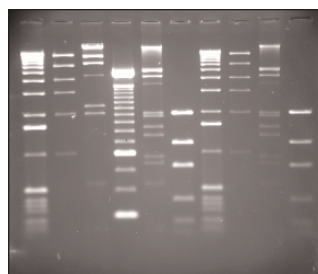
CATALOG#	DESCRIPTION
JSB-302	DOUBLE-WIDE MINI GEL-O SUBMARINE SYSTEM *Comes complete with lid, UV transmittant casting tray (10cm), casting fixture (10cm), one 1.5mm x 27 tooth comb, comb holder, bubble level, adjustable feet, and power cords.



JSB-302 comes complete with: lid, UV transmittant casting tray (10cm), casting fixture (10cm), one 1.5mm x 27 tooth comb, comb holder, bubble level, adjustable feet, power cords, and operation manual.

The JSB-302 is designed for nucleic acid screening electrophoresis. The maximum suggested applied voltage for the electrophoresis of DNA in agarose gels using the JSB-302 is 150 volts. In a 1% TBE gel, this translates into a run time of approximately 1 hour. Lower voltages may be used, of course, and as a general rule, a 75 volt run will take twice as long as a 150 volt run. Higher voltages may be used to decrease run time; however, if the unit is being operated at higher voltages than 150 volts the heat generated during electrophoresis may decrease sample resolution. Such artifacts may be avoided by running the unit in a cold room or adding 1X electrophoresis buffer "ice cubes" to keep the unit properly cooled.

The suggested run parameters for the electrophoresis of RNA in agarose gels containing formaldehyde are 60-80 volts.



JSB-302 1.0% TBE Gel Run

The Jordan Ultra-Wide Mini Gel-O Submarine System is designed for quick screening a large number of samples with limited agarose (100ml) usage. It is ideal for PCR, RFLP analysis, or plasmid screening. The JSB-96 microtiter plate format can run all samples, as well as standards and blanks in under 90 minutes. The microtiter format combs are designed for quick loading with a multichannel pipette. The combs accommodate multiple loading by a micropipetter, leaving room for molecular weight markers. The JSB-96 is constructed of durable cast acrylic, for years of faithful use.

ORDERING INFORMATION

CATALOG#	DESCRIPTION
JSB-96	ULTRA-WIDE MINI GEL-O SUBMARINE SYSTEM *Comes complete with lid, UV transmittant casting tray (15cm), casting fixture (15cm), two 1.5mm x 25 tooth combs, two 1.5mm x 50 tooth combs, two comb holders, bubble level, adjustable feet, and power cords.



JSB-96 comes complete with: lid, UV transmittant casting tray (15cm), casting fixture (15cm), two 1.5mm x 25 tooth combs, two 1.5mm x 50 tooth combs, two comb holders, bubble level, adjustable feet, power cords, and operation manual.



Multichannel Pipette Compatible
(8 or 12 Channel)

The JSB-96 is designed for nucleic acid screening electrophoresis. The maximum suggested applied voltage for the electrophoresis of DNA in agarose gels using the JSB-96 is 170 volts. In a 1% TBE gel, this translates into a run time of approximately 1 hour. Lower voltages may be used, of course, and as a general rule, a 85 volt run will take twice as long as a 170 volt run. Higher voltages may be used to decrease run time; however, if the unit is being operated at higher voltages than 170 volts the heat generated during electrophoresis may decrease sample resolution. Such artifacts may be avoided by running the unit in a cold room or adding 1X electrophoresis buffer "ice cubes" to keep the unit properly cooled.

The suggested run parameters for the electrophoresis of RNA in agarose gels containing formaldehyde are 60-80 volts.

SPECIFICATIONS

	Height	Width	Length
Unit Dimensions:	7.5cm	27.0cm	31.0cm
Gel Dimensions:		23.5cm	15.0cm

CAPACITY

- Maximum Sample Capacity: **200 Samples** (4 Comb, 50 Samples Ea.)
- Buffer Capacity: **850ml**
- Distance Between Electrodes: **19.0cm**
- Maximum Voltage: **200V**

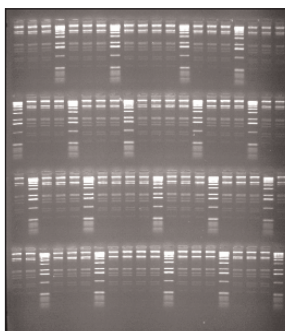
ACCESSORIES AND REPLACEMENT PARTS

CATALOG#	DESCRIPTION
CS-9615	JSB-96 Casting Fixture, 15cm
GB-9615	JSB-96 Gel Bed, 15cm
CS-9610	JSB-96 Casting Fixture, 10cm
GB-9610	JSB-96 Gel Bed, 10cm
CS-9675	JSB-96 Casting Fixture, 7.5cm
GB-9675	JSB-96 Gel Bed, 7.5cm
CH-96	JSB-96 Comb Holder
HA-960-B	Replacement JSB-96 Electrode Assembly-Black
HA-96-R	Replacement JSB-96 Electrode Assembly-Red
JSB-96-C	Replacement JSB-96 Lid w/Power Cords
SPC-M4	Replacement Jordan Power Cords
230000-00	Replacement Feet and Bubble Level

ADDITIONAL COMBS AVAILABLE

CATALOG#	DESCRIPTION	WELL WIDTH	SAMPLE VOLUME PER MM GEL
CB96-0825	0.8mm x 25 tooth, MCP**	5.8mm	4.7µl
CB96-0840	0.8mm x 40 tooth	4.0mm	3.2µl
CB96-0850	0.8mm x 50 tooth, MCP**	2.9mm	2.3µl
CB96-1525	1.5mm x 25 tooth, MCP**	5.8mm	8.7µl
CB96-1540	1.5mm x 40 tooth	4.0mm	6.0µl
CB96-1550	1.5mm x 50 tooth, MCP**	2.9mm	4.4µl
CB96-3025	3.0mm x 25 tooth, MCP**	5.8mm	17.4µl
CB96-3040	3.0mm x 40 tooth	4.0mm	12.0µl
CB96-15P	1.5mm, 2 markers, 1 sample	6.4, 204.0mm	9.6, 306.0µl
CB96-30P	3.0mm, 2 markers, 1 sample	6.4, 204.0mm	19.2, 612.0µl

MCP** - Multichannel Pipette Compatible



JSB-96 1.5% TBE Gel Run

WANT TO SAVE ON AGAROSE?

The JSB-96 has additional gel beds with matching casting fixtures available that allow the user to cast a shorter gel when extended resolution of molecules is not necessary. Ideal for quick screens to verify PCR.

TOLL FREE: 1-800-253-4942