

## MIDIGEL 2

**APPLICATION:** Accommodates standard gels for both analytical and preparative studies of nucleic acid. Designed for separations of DNA and RNA restriction fragments in agarose gel as well as PCR® screening and RFLP.

- Maximum number of samples: 72 with 4 combs.
- Gel tray 10 x 14 cm has 4 spaces for combs insertion.
- Gel tray 10 x 8 cm has 2 spaces for combs insertion.
- Combs 10, 16 and 18 teeth compatible with multichannel pipettes.
- Preparative combs also available.
- 4 adjustable feet and bubble level.
- Red strips for wells visualisation.



**ONE FREE GEL TRAY WHEN ORDERING 2 ADDITIONAL COMBS**

### TECHNICAL SPECIFICATIONS

Buffer Volume	800 ml
Unit dimensions (w x l x h)	28 x 16 x 9 cm

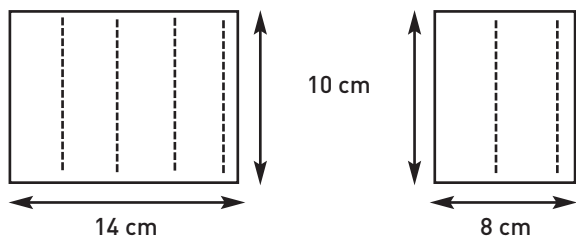
### ORDERING INFORMATION

<b>321000</b>	<b>MIDIGEL 2. Includes:</b> Removable U.V. transparent gel tray 10 x 14 cm (w x l), 2 removable casting gates, 2.0 mm thickness 16 teeth comb, sample volume 24 µl*, safety lid, set of power leads, buffer circulation accessories, user's manual			
<b>3210PF</b>	<b>PACK F. Includes:</b> MIDIGEL 2 Fully equipped as above Cat. No 321000 + Power supply PS 304			
	Thickness	Teeth	Sample volume*	Well width
320101	Comb 1.0 mm	10	24 µl	6.0 mm
320102	Comb 2.0 mm	10	48 µl	6.0 mm
320103	Comb 3.0 mm	10	72 µl	6.0 mm
320161	Comb 1.0 mm	16	12 µl	3.0 mm
320162	Comb 2.0 mm	16	24 µl	3.0 mm
320163	Comb 3.0 mm	16	36 µl	3.0 mm
320181	Comb 1.0 mm	18	14 µl	3.5 mm
compatible with multichannel pipettes				
320121	Prep Comb 1.0 mm	1 sample/2 markers	360 µl/2 x 12 µl	90.0/3 mm
320221	Prep Comb 1.0 mm	2 samples/2 markers	160 µl/2 x 12 µl	40.0/3 mm
320122	Prep Comb 2.0 mm	1 sample/2 markers	720 µl/2 x 24 µl	90.0/3 mm
321100	U.V. transparent tray 10 x 14 cm (w x l) Supplied with 2 removable casting gates			
321050	U.V. transparent tray 10 x 8 cm (w x l) Supplied with 2 removable casting gates			
320700	Set of power leads			
340500	Separate gel Casting base with adjustable feet and bubble			

\* for a 5 mm thickness gel

# TANKS FOR NUCLEIC ACIDS

## NUMBER OF COMBS AND GEL DIMENSIONS



Gel tray - Cat. No. 321100  
4 comb slots

Gel tray - Cat. No. 321050  
2 comb slots



Delrin Combs

## SUGGESTED POWER SUPPLIES (Page 6)

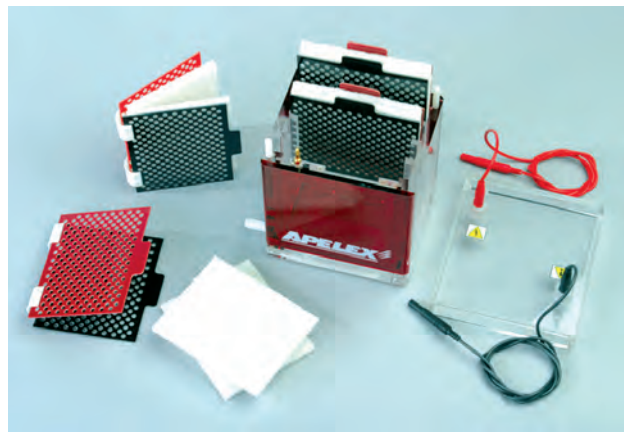


PS 304 - Cat. No. 160500



PS 305 - Cat. No. 170000

## SUGGESTED BLOTTING TANKS (Pages 44-45)



Mini Transblotter - Cat. No. 430000



Slim blotter - Cat. No. 504001

## PACK F - Cat. No. 3210PF



**INCLUDES: MIDIGEL 2 + PS 304**  
**ONE FREE GEL TRAY WHEN ORDERING 2 ADDITIONAL COMBS**



Page 6

# POWER SUPPLIES

COST EFFECTIVE SOLUTIONS  
WITH OUR DNA ELECTROPHORESIS PACKS



**PACK A**  
MINIGEL 2

PS 304



**PACK 96S**  
MIDIGEL XL 96 samples

PS 304



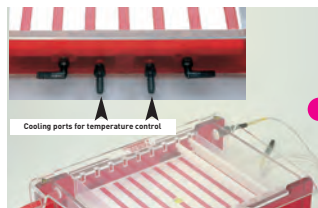
**PACK B**  
MIDIGEL XL

PS 304



**PACK C**  
MAXIGEL ECO 2

PS 305



**PACK F**  
MIDIGEL 2

PS 304



**PACK G**  
MAXIGEL THERMO 2

PS 305



**PACK H**  
MAXIGEL XXL

PS 608

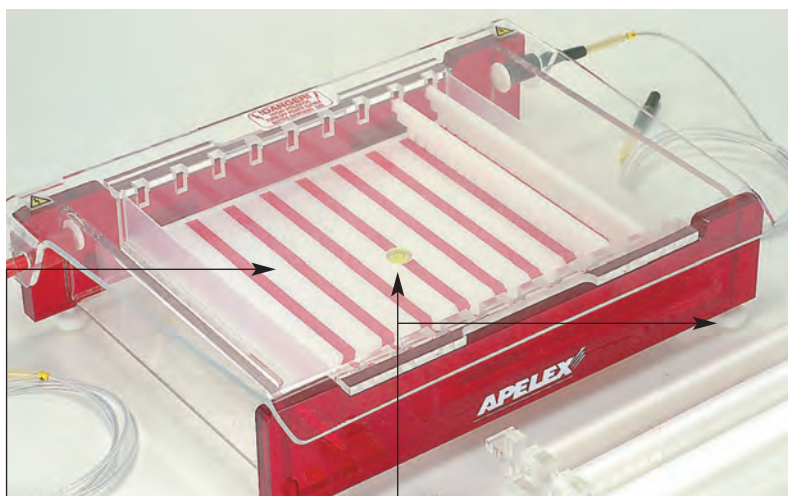
## REFERENCES

DNA Tanks - Pages 14-27

<b>PACK A</b>	Cat. No. 3110PA	Tank MINIGEL 2	Cat No. 311000	+	Power Supply PS 304	Cat. No. 160500
<b>PACK 96S</b>	Cat. No. 371696	Tank MIDIGEL XL 96 samples	Cat No. 371000	+	Power Supply PS 304	Cat. No. 160500
<b>PACK B</b>	Cat. No. 3700PB	Tank MIDIGEL XL	Cat No. 370000	+	Power Supply PS 304	Cat. No. 160500
<b>PACK C</b>	Cat. No. 3410PC	Tank MAXIGEL ECO 2	Cat No. 341000	+	Power Supply PS 305	Cat. No. 170000
<b>PACK F</b>	Cat. No. 3210PF	Tank MIDIGEL 2	Cat No. 321000	+	Power Supply PS 304	Cat. No. 160500
<b>PACK G</b>	Cat. No. 3310PG	Tank MAXIGEL THERMO 2	Cat No. 331000	+	Power Supply PS 305	Cat. No. 170000
<b>PACK H</b>	Cat. No. 8100PH	Tank MAXIGEL XXL	Cat No. 812340	+	Power Supply PS 608	Cat. No. 173000



# TANKS FOR NUCLEIC ACIDS

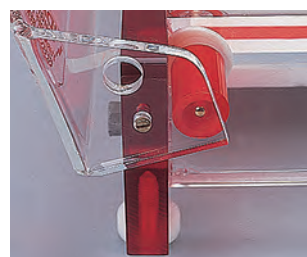


White gel table with bright red visualization strips to enhance visibility and make sample loading easier.

Levelling feet at each corner and levelling bubble allow perfect long size gel running MINIGEL 2 and MICROGEL 2 have rubber feet to reduce slipping.



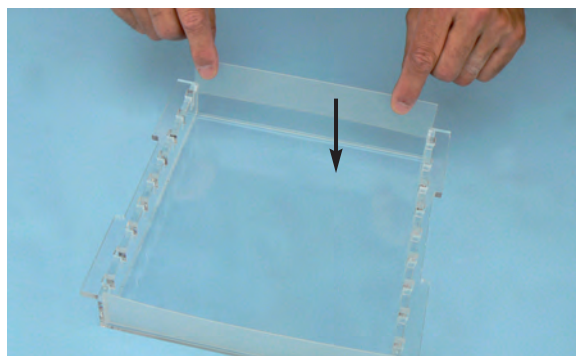
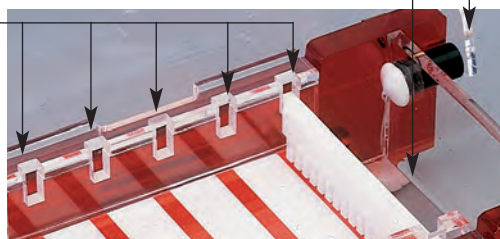
When the lid is closed, power cords must be completely removed to allow the opening.



When the lid is open a barrier prevents power leads to be connected to the tank.

Gold plated connectors and platinum electrodes avoid corrosion and poor electrical contact.

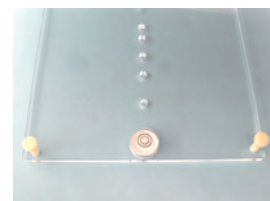
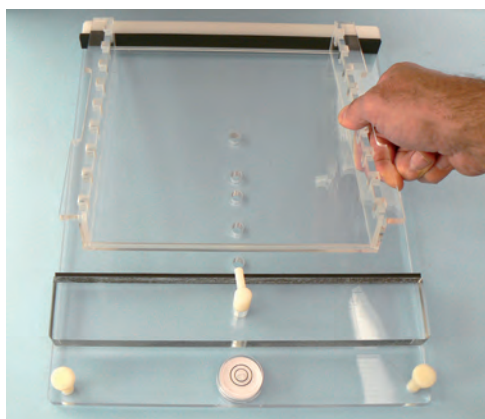
Multiple comb slots allow flexible capacities. Direct position of the comb, the height does not have to be adjusted.



**Removable casting gates** fit into grooves at each side of the gel tray to create tape free seals. The gel is directly poured in the gel tray outside or inside the tank. One set of two removable casting gates is provided with each gel tray.

## OPTION: Separate Gel casting base

Designed for the full range of gel trays, the casting base Cat. No. 340500 and Cat. No. 340600 can be separately provided. They are equipped by three adjustable feet and one levelling bubble.



# TANKS FOR NUCLEIC ACIDS

## SUBMARINE AGAROSE GELS

### ROBUSTNESS

Tanks, lids and gel trays are made of 10 or 6 mm thick acrylic. No injection molded part, no warping in the event of too hot media being poured or overheating running situations.

### QUALITY

A wide range of precision-made DELRIN combs LIFE GUARANTIED. Many thicknesses and tooth configurations accomodate many samples including compatibility with multichannels pipettes or large sample volume.

### EASE OF USE

U.V. transparent gel trays which enable to view ethidium bromide stained gels. Include a fluorescent rule.

